



Learn to ...

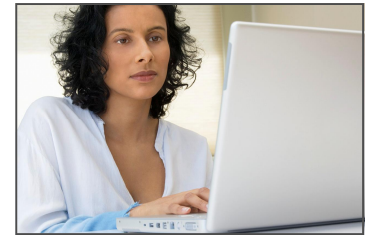
Social Care Expo

09

Come & see us at the All Seasons stand on 18th June. Discounts available for courses booked on the day!

## Enjoy the Many Benefits of e-inductions Plus Receive MONEY BACK when TSI Funding Accessed!

- **20% off** when 5 licences purchased (to be started within 6 months)
- **Save money** plus it is Skills for Care TSI fundable
- **Save time** - you don't have to repeat the same information
- **It's fun, easy to use and affordable** - even if you are new to e-learning
- **Meet Skills for Care Common Induction Standards**
- **Consistent high quality**
- Managers can **check progress** at any time
- It provides a **gentle step towards NVQ training**



visit [www.learntocare.com/induction](http://www.learntocare.com/induction) for on-line demo

**only £35 each**

**ORDER YOUR LICENSES TODAY**, call 01227 265899 option 2 or e-mail [l.pring@learntocare.com](mailto:l.pring@learntocare.com)

## NEW - 3 Month Training Planner - limited spaces available

Learn to ... and Learn to Care are bringing high quality, low cost training to venues in Herne Bay, Whitstable, Dover and Margate (see overleaf for further details). For the full range of training including in-house, bespoke, statutory and specialist courses please visit [www.learntocare.com](http://www.learntocare.com).

<b>First Aid Appointed Person</b> <b>legal requirement</b>	<b>£45</b>	11th June	10th July	18th August
<b>Adult Protection (POVA)</b>	<b>£35</b>	3rd June	7th July	13th August
<b>Health and Safety</b>	<b>£35</b>	16th June		12th August
<b>Basic Food Hygiene</b>	<b>£35</b>	19th June	9th July	
<b>Infection Control</b>	<b>£35</b>	5th June		26th August
<b>Alzheimer's and Dementia</b>	<b>£35</b>	26th June	24th July	20th August



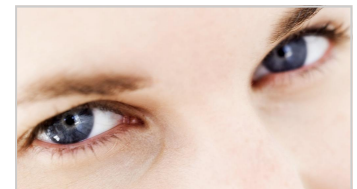
Book **NOW** call 01227 265899 opt 2 or 07969 128497, alternatively e-mail [c.baker@learntocare.com](mailto:c.baker@learntocare.com).

## SPECIAL OFFER - save £25 per person

Book a Leadership and Management day course at least 1 month in advance, and save £25 off the regular price of £100 per person. Choose from the following selection of courses to become a better, more effective leader:



<b>Managing Conflict in the Workplace</b>	23rd June
<b>Solving Problems and Making Decisions</b>	29th July
<b>Introduction to Leadership</b>	27th August



Courses are suitable for managers and team leaders from all industry sectors and can contribute to a VRQ level 3 in Leadership and Management. Training to be held at Hall Place, Canterbury.

01227 265899 [info@learntocare.com](mailto:info@learntocare.com) [www.learntocare.com](http://www.learntocare.com)  
Learn to ..., 33a Joseph Wilson Ind Est, Whitstable, Kent, CT5 3PS.



**SPECIAL OFFER**  
**Save £25** per person on leadership and management training when booked 1 month in advance



**Learn to ...**

**To book call 01227 265899, 07969 128497 or e-mail [c.baker@learntocare.com](mailto:c.baker@learntocare.com)**

### Statutory & Specialist Training

price per person - lunch not included

- First Aid Appointed Person    £45
- Adult Protection (POVA)    £35
- Health and Safety    £35
- Basic Food Hygiene    £35
- Infection Control    £35
- Alzheimer's and Dementia    £35

### Management Training

£100 per person (**see special offer**) - lunch included

- Managing Conflict (Workplace)
- Solving Problems Making Decisions
- Introduction to Leadership

**To Book:**

call 01227 265899 opt 2, 07969 128497  
 or e-mail [c.baker@learntocare.com](mailto:c.baker@learntocare.com)

**Learn to ... is a quality but low cost training provider.**

Discounts available for regular bookings or large groups.

Learn to ... is part of Learn to Care.

Visit [www.learntocare.com](http://www.learntocare.com) for the full range of training courses, qualifications and funding available.

June 2009				
Mon	Tues	Wed	Thurs	Fri
1	2	3 Margate	4	5 Whitstable
8	9	10	11 Margate	12
15	16 Margate	17	18	19 Whitstable
22	23 Canterbury	24	25	26 Whitstable
29	30			

July 2009				
Mon	Tues	Wed	Thurs	Fri
		1	2	3
6	7 Whitstable	8	9 Margate	10 Whitstable
13	14	15	16	17
20	21	22	23	24 Dover
27	28	29 Canterbury	30	31

August 2009				
Mon	Tues	Wed	Thurs	Fri
3	4	5	6	7
10	11	12 Herne Bay	13 Dover	14
17	18 Dover	19	20 Margate	21
24	25	26 Dover	27 Canterbury	28
31				



Management courses can contribute towards a Vocationally Related Qualification (VRQ), contact Learn to ... for further information.



**01227 265899   [info@learntocare.com](mailto:info@learntocare.com)   [www.learntocare.com](http://www.learntocare.com)  
 Learn to ..., 33a Joseph Wilson Ind Est, Whitstable, Kent, CT5 3PS.**